



Gunnersbury Close, Chiswick, W4 4AH

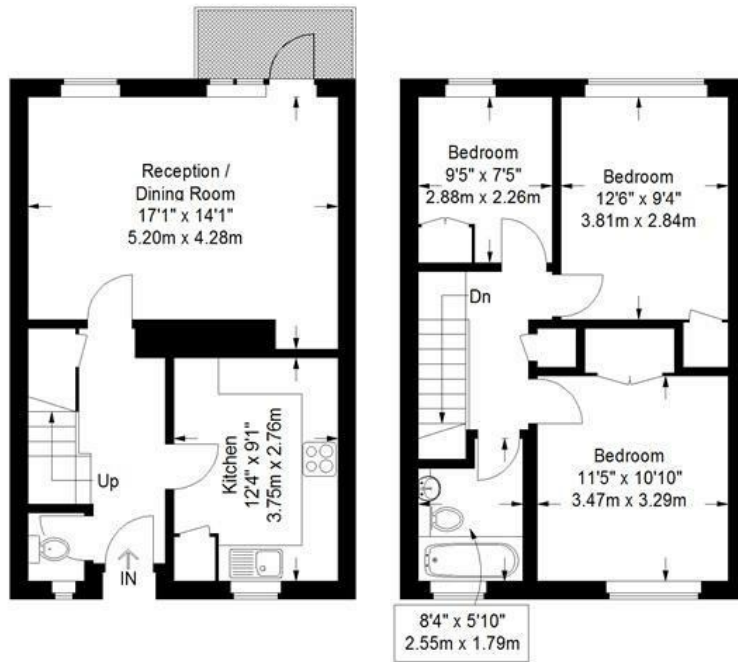
A nicely presented purpose-built three bedroomed maisonette located in this development just a few moments from Chiswick High Road with is an array of boutique shops and restaurants retailers include M&S, Waitrose, Sainsbury and Tesco Accommodation provides a spacious reception room with balcony, fitted kitchen entrance floor cloakroom stairs to the upper floor, three bedrooms, bathroom, gas fired central heating, separate bike store/storage, off-street parking (not designated) Local transport links include Gunnersbury and Chiswick Park tube stations numerous local bus routes with convenient access via A4/M4 central London, Heathrow and the West the property is available early July 2021 and is offered furnished

- Spacious three bedroomed apartment
- Duplex over two levels
- Great for transport links
- Spacious reception room
- Balcony /terrace
- Fitted Kitchen
- Three bedrooms
- Bathroom
- Undesignated parking & Storage
- Available early July, furnished

£1,650 Per Calendar Month

Gunnersbury Close, Chiswick High Road W4 4AH

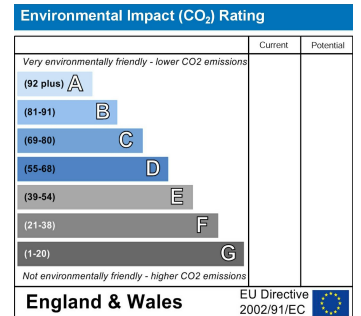
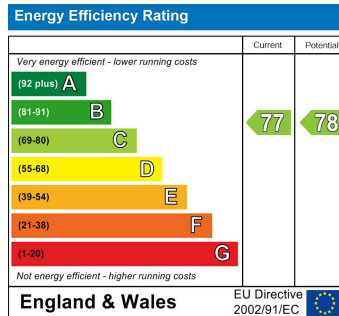
Approximate Gross Internal Area
 Ground Floor = 42.1 sq m / 453 sq ft
 First Floor = 42.4 sq m / 456 sq ft
 Total = 84.5 sq m / 909 sq ft



First Floor

Second Floor

Measured in accordance with RICS guidelines. To be used for identification and guidance purposes only. Not to scale.
 © Photos Plans and EPCs | Tel: 07774 688 771 | info@photosplansandepcs.com | www.photosplansandepcs.com



5-7 Turnham Green Terrace, Chiswick, London, W4 1RG
 Tel 020 8747 8800

E-mail lettings@whitmanandco.com
 Website www.whitmanandco.com

